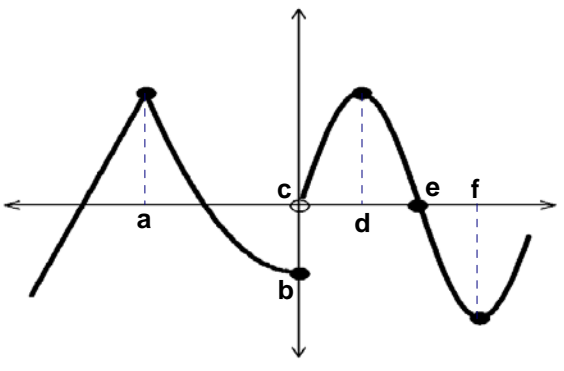


AP Calculus AB

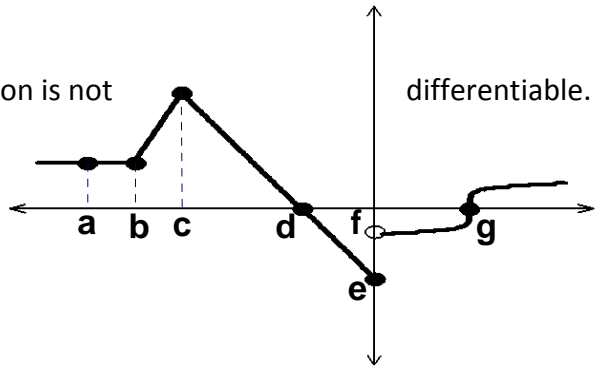
Name: _____

- 1) What are the three ways for a function to fail to be differentiable at a particular point $P(c, f(c))$:
- a) _____
 - b) _____
 - c) _____

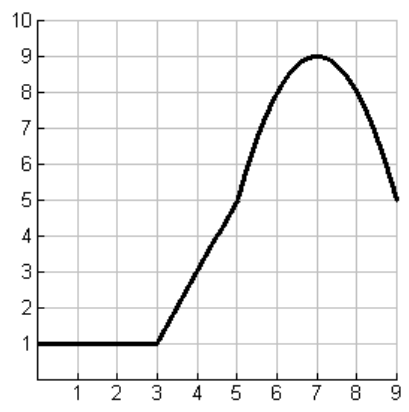


- 2) Use the graph to determine all x-values at which the function is not differentiable. Explain each answer.

- 3) Use the graph to determine all x-values at which the function is not differentiable. Explain each answer.

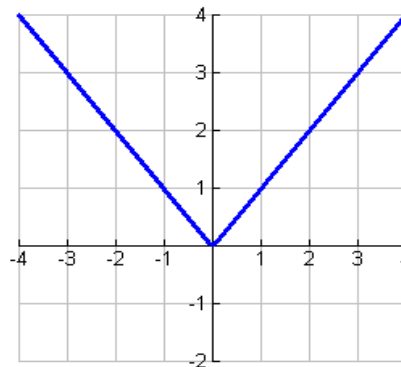


- 4) Let $f(x)$ be the function whose graph is shown in the figure.
- (a) Determine: $f'(1) =$ _____, $f'(2) =$ _____, $f'(4) =$ _____, $f'(7) =$ _____.
 - (b) Estimate: $f'(6) =$ _____, $f'(8) =$ _____.
 - (c) Does $f'(3)$ exist? _____ Explain.

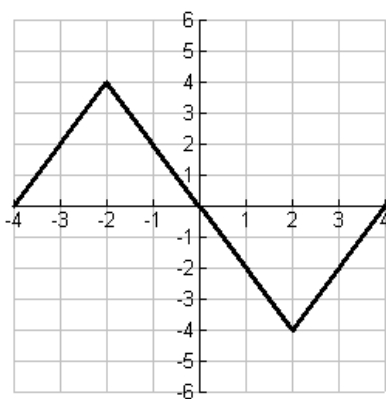


5) Use the given graph to estimate the value of each derivative. Then sketch the graph of f' .

- (a) $f'(-3) =$ _____ (b) $f'(-2) =$ _____
 (c) $f'(-1) =$ _____ (d) $f'(0) =$ _____
 (e) $f'(1) =$ _____ (f) $f'(2) =$ _____
 (g) $f'(3) =$ _____



Then

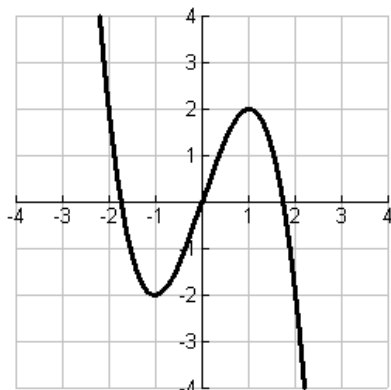
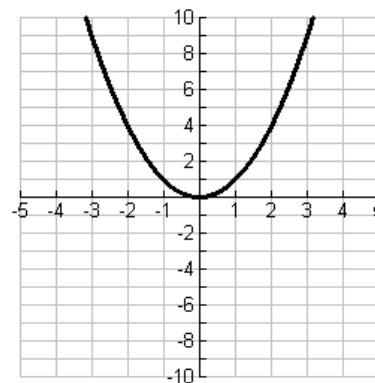


6) Use the given graph to estimate the value of each derivative. Then sketch the graph of f' .

- (a) $f'(-3) =$ _____ (b) $f'(-2) =$ _____
 (c) $f'(1) =$ _____ (d) $f'(0) =$ _____
 (e) $f'(1) =$ _____ (f) $f'(2) =$ _____
 (g) $f'(3) =$ _____

7) Use the given graph to estimate the value of each derivative. Then sketch the graph of f' .

- (a) $f'(-3) =$ _____ (b) $f'(-2) =$ _____
 (c) $f'(-1) =$ _____ (d) $f'(0) =$ _____
 (e) $f'(1) =$ _____ (f) $f'(2) =$ _____
 (g) $f'(3) =$ _____



8) Use the given graph to estimate the value of each derivative. Then sketch the graph of f' .

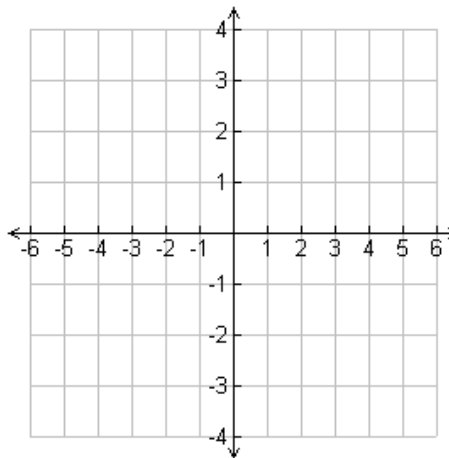
- (a) $f'(-2) =$ _____
 (b) $f'(-1) =$ _____
 (c) $f'(0) =$ _____
 (d) $f'(1) =$ _____
 (e) $f'(2) =$ _____

9) Let $f(x) = \sqrt[3]{x}$.

(a) Sketch the graph of $f(x)$.

(b) Find $f'(x)$

(c) Show that $f'(0)$ does not exist.



Definition of derivative

The derivative of $f(x)$ with respect to x is $f'(x) = \lim_{h \rightarrow 0} \frac{f(x+h) - f(x)}{h}$ provided the limit exists. The process of calculating a derivative is called **differentiation**.

10) Find the derivative of the function using the definition of derivative: $f(x) = x^2 - x$

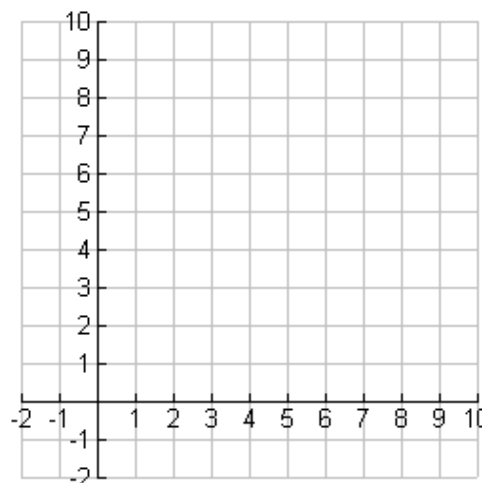
11) For $f(x) = \sqrt{x}$

(a) Find $f'(x)$ using the definition of derivative.

(b) State the domain of

i) $f(x)$.

ii) $f'(x)$.



(c) Sketch the graph of

i) $f(x)$

ii) $f'(x)$

12) Use the Power Rule to compute the derivative.

(a) $f(x) = x^3 + 4x^2 - 3x + 56$

(b) $f(x) = \frac{1}{x^3}$

(c) $f(x) = \sqrt[4]{x}$

13) Find $\frac{dy}{dx}$: $y = 6\cos(x) - 2\sin(x)$

14) Find the point on the curve $f(x) = x^2 + 3x - 7$ at which the slope of the tangent line is horizontal.

15) Find the point on the curve $f(x) = x^2 + 3x - 7$ at which the slope of the tangent line is equal to 4.

16) Given $f(x) = 4x - x^2$.

(a) Find the slope of the tangent line to the parabola $f(x) = 4x - x^2$ at the point (1, 3).

(b) Find the equation of the tangent line in part (a).

- 17) If $f(2) = 6$ and $f'(x) = -3$, find an equation of the tangent line when $x = 2$. Solve the equation for y .
- 18) If a ball is thrown into the air with a velocity of 40ft/sec, its height (in feet) after t seconds is given by $y = 40t - 16t^2$. Find the velocity when $t = 2$.